


Exhibition Poultry

The #1 Internet Publication For Information On Showing & Breeding Exhibition Poultry

Volume 12 No. 1 • <https://www.ExhibitionPoultry.net> • January/February 2023

 **Nutrena**
What's inside counts.

Bonnie Morgan's bantam Golden Duckwing Phoenix was a winning entry in EPMag's photo contest sponsored by Cindy Rusk. Bonnie is from Whitesburg, Tennessee.



Chris & James

BREEDING
STANDARD BRED LARGE FOWL
BB RED MALAYS
WHITE ROCK
BLACK LANGSHANS
CORNISH- WHITE, DARK, WHITE LACED RED
APA MASTER EXHIBITOR #619



chris2fordm@yahoo.com

Exhibition Poultry

Table of Contents

American Bantam Association News	04
Cindy Rusk Sponsored Photo Competition	07
Dexter Fields Sponsored Photo Competition	09
Breeds With Issues	10
Got Eggs? Yorkshire Pudding Recipe	15
McMurray Sponsored Photo Competition	19
In The Beginning: The American Class	20
Egg Setting Table	22

Advertisers Index

Chris McGeorge	02
Cindy Rusk	04
American Bantam Association	05
Cindy Rusk	06
Dexter Fields	08
T & M Sumatras	11
CVPC Shows	12
CVPC Shows	13
Nutrena	14
Nutrena	16
McMurray Hatchery	18
Smith Poultry Supplies	23

Exhibition Poultry Magazine®

Ad deadline is the 15th of the month preceding issue date.

Advertising & Subscription

To subscribe, or submit display ads, club, show, and judges go to:
<https://www.ExhibitionPoultry.net>

Exhibition Poultry Magazine

180 Snowden Rd., Winnfield, LA 71483

Editor/Publisher: Ann Charles, (318) 209-9802 (txt only please)

email: contact@SkyBlueEgg.com

IT/Publisher: Andrew Charles, (318) 413-9489 (leave message)

email: admin@exhibitionpoultry.net

Exhibition Poultry Magazine publishes advertising, articles, and show results from across the United States and Canada. We reserve the right to refuse an advertisement or article that is deemed to be inappropriate content by the Managing Editor of this publication. The views, information, or opinions expressed in articles or advertising in this publication are solely those of the individuals involved and do not necessarily represent those of Exhibition Poultry Magazine, its employees, or its owners.



From the Editor . . .

Welcome to a brand New Year and a fresh start. I am praying it is nothing like last year with all it's problems and issues.

This last month has been busy with photo contests complete with great prizes sponsored by individual advertisers in this publication. We have run EPMag photo contests for a few years now but I am awestruck in the increase in number of entries and the quality of the photos being submitted. Our Facebook group has just now hit 7000 members but the increase in photo contest entries seems exponential, even with such a large group of members. Andrew can tell you all the details based on stats from our various platforms but the numbers are rocking! The interest in Exhibition poultry is just huge and new members join our Facebook group daily.

As you all know, our advertisers breed some of the best birds in the country as evidenced by their many wins, and we appreciate them all. I am hearing that they are selling enough birds with us to prove that their ad with EPMag was, and is, an excellent investment for each of them. There are many breeds not yet included in these pages. Consider letting us market your excess Exhibition birds for you.

Most of us are already hatching or at least giving the idea serious thought. I have a list of people that are waiting for me to decide which of my started chicks I will not be continuing on with. My excess chicks start leaving here about 3 weeks of age. Usually in two or three per box. This age is an ideal time to move purebred birds that are good, but just not quite good enough. If you don't have a waiting list of buyers—you should.

Ann Charles
Editor




The ABA ended the year with a bang at our National Meet held at the Ohio National in Columbus. The weather was wonderful and it even snowed a bit! It was a great show and we really want to thank the Ohio National for hosting. Holding a show this size is no small undertaking and they pull it off seamlessly. Folks from all over the country brought their "A Game" and it was reflected in the caliber of birds. We would like to congratulate Brett and Adam Thompson of Thompson Bantams from AL on Champion Bantam and Show Champion with a Browned Modern female and Reserve Bantam and Reserve Show Champion with a black Sumatra bantam male. Thank you to all the exhibitors who showed and made the 2022 ABA National Meet one to remember.

The ABA table and auction at the National was also a huge success and we (Karen, Kevin, and myself) enjoyed getting to catch up with so many of you and to meet so many new faces to the ABA. It is always nice to chat, catch up, and meet in person! Thank you to everyone who made purchases of shirts, publications, legbands, and ABA mer-

chandise.

The ABA auction once again proved to be a highlight for many. This year in addition to birds we were able to offer a selection of books, historical ABA

memorabilia, prints, paintings, and poultry memorabilia. The "must have" auction item this year proved to be the American White Serama pair donated by Tim Hopkins which brought in an



Cindy Rusk

WINDGATE FARMS

Raising Call Ducks

WHITES
PASTEL
BLUE FAWN
BLACK &
BLUE BIB
SNOWIE
MAGPIE

CHOCOLATE
BLACK
NUTMEG
GREY
BUFF
BLUE
SILVER

SW MISSOURI

TEXT ONLY: 417-499-4855

impressive final bid amount. We would like to thank everyone who both donated and bid in the auction...your generous donations and bids make this possible year after year.

In other ABA news...The ABA recently added, and would like to congratulate, two new judges Emily Shoop #387 of Pennsylvania and Dan Castle #388 of Connecticut. The ABA currently has 11 apprentices in the judging program and is always looking to add to our ABA licensed judges.

Going into 2023 the ABA is in full swing. We will be updating both the website and Facebook page in the coming months to serve the membership better and Karen has been hard at work setting up new starred win files. We are excited to announce no

dues increase for 2023! Current dues for US new members are \$30/1year, \$75/3 years, and \$105/5 year. Renewal dues are \$25/1 year, \$70/3 year, and \$100/5 year. As mentioned previously we do once again offer a lifetime endowment membership at \$1000. If you know of someone not a current ABA member or interested in joining the ABA please share your positive ABA member experience! Don't forget to remind them to drop your name as "referred by" so we can enter you in the raffle for free ABA merch!

Show Sanctions are steadily coming in and I would like to encourage shows to send sanctions early so we can add them to the internal ABA file which will also link to the ABA Sanctioned Show

List on Poultry Show Central as well as have them listed in the ABA Quarterly Newsletters. Sanctioning is easy, you can find the sanction show report on the ABA website, or by sending your show information to ABApoultryshows@gmail.com. Some shows have recently asked and yes, junior shows can be sanctioned. A sanctioned Junior Shows works in the same way as a normal sanction with the accompanying fees, rules, and wins being reported and calculated in the same way. We hope to see you and your bantams at the shows!

Cheers to 2023!

Michelle Lynch

email: membershipABA@gmail.com

website: bantamclub.com

Come join the American Bantam Association and Spread Your Wings!

- One Year Membership
- 2020 Standard
- Mini Standard
- 2019 Yearbook • Euro Sticker
- Vintage ABA Yearbook

FLYING START SPECIAL

ALL FOR
\$100

As an ABA member, you will receive top breeders contact information, coupons for poultry items, best pricing on ABA Legbands, updated show information, Bantam Standard for judging, and so much more!

Visit **www.bantamclub.com** to join
or send check or money order to
ABA, PO Box 127 - Augusta, NJ 07822



CINDY RUSK WINDGATE FARMS



**(417) 499-4855 TEXT
ONLY**

EPMag.News

CINDY RUSK

Photo Competition

Winners:

*Tyler Anderson, Parker Padilla
and Bonnie Morgan*

Over 700 entries were submitted!

Thank you to all of the participants!

Prizes: \$25 each courtesy of Cindy Rusk
(Windgate Farm)





504-301-5382

Text Only

Zia



Serama Farm



Dexter Fields

NPIP certified flock/tester
Licensed SCNA Judge
ABA/APA Member

Specializing in American/ABA Colors
for In-Cage or Table Top Competition
Other traditional colors, smooth and
frizzled for table top also available.



Albuquerque,
New Mexico



spklred@yahoo.com
www.facebook.com/ZiaSeramas

Dexter Fields Photo Competition Winners:

Congratulations to Brigitta Anne Shaffer, John Wayne Hill, and Cindy Lou Wilson!

Over 650 entries were submitted! Thank you to all of the participants!

Prizes: \$25 each courtesy of Dexter Fields (Zia Serama Farm)



© Cindy Lou Willson
Buc~A~Buc Farm

Does Your Breed Have Issues?

Welcome to the World of the Araucana

By Ann Charles

You have to love this age of digital cameras, especially on our phones. When is the last time you looked inside your chickens beak and took a photo? This Araucana pullet was having some swallowing issues and the owner/photographer **Ashley Nicole** sent me this amazing photo of what she discovered.

Inside this Araucana pullet's

mouth is a fleshy 'bump' (on the right side) that tried to be a peduncle. But instead of growing on the side of the head where it belongs, it ended up inside her mouth, feather and all. Ashley's vet has remedied this issue.

Tufts/peduncles are formed at about three days into the development of an Araucana chick. Things can go wrong and often do. Peduncles can easily be damaged, or removed if so de-

sired. Often other birds rip them off, but they can also be removed with a simple snip of the scissors. I once had a triple tufted pullet that grew a large third tuft in the middle of her breast, much like a Turkey's beard. A pair of scissors took care of that (with full disclosure to the new owner of course).

What issues does your favorite breed have that are specific to your particular breed?



T&M Sumatras

Tom Kernan (NJ) & Mary Lewandowski (VA)

APA - Hall of Fame Exhibitor & Master Exhibitor

Quality birds in:
LF Sumatra, Black & Blue
BTM Sumatra, Black & Blue
Ameraucana, Black & Ermine
Welsumers LF



Call or text:
Tom 856 305-9718 ~ Mary 540 905-3794



Giant High Quality Poultry & Waterfowl Show	Breeders Cup Auction	Contests, Games and Raffles & Family Fun
Huge Junior Show	Huge Showmanship Contest	MEGA National Egg Show
Breed Championship Specials	Championship Buckles	Sales Booths, Sales Area for Birds

MEGA Queen & King Contest - MEGA HALL Of Fame Awards - MEGA EXHIBITOR Of The Year Award

**NOT JUST ANOTHER POULTRY SHOW
IT'S A MEGA POULTRY EVENT**

Sat. Nov. 4th, 2023

Norman, OK

Details on Facebook & www.poultryshowcase.com

WE WANT YOUR BREED Represented At The 2023



**15-30 Breed Specials Will Be Offered
You Need Not Be A Breed Club Member To Sponsor A Breed**

**Help Sponsor One Of These Breed Specials
> Any Breed Will Be Considered <**

**Cornish
Cochins
Salmon Faverolle
Waterfowl
RI Reds**

**Hamburg
Leghorns
Australorps
Marans
Ameraucanas**

Breed Special Add On Premiums Are In Addition To Regular Show Premiums

**Contact Us Today For Details
<https://www.facebook.com/apa.judge/>**

20% more eggs.

That's a difference
you can count.

 **Nutrena®**
What's inside counts:



For a happy and healthy flock, the science is complicated, but the math is simple. Hens eating NatureWise® Layer Feed produced one more egg per week on average.¹ But don't take our word for it.



Scan the QR code or go to
NutrenaWorld.com/see-the-difference
and experience the difference yourself.

¹In multiple Cargill in-field trials we observed 20% more eggs (approximately 1 additional egg/hen/week) with the NatureWise fed hens compared to the same hens when fed a Premium Competitor's brand. We also observed much larger eggs moving them 1 full grade larger. Feed cost was also lower on NatureWise.

© 2022 Cargill, Incorporated. All rights reserved.

Got Eggs?

Make Yorkshire Pudding!

And it's soooooo easy.

By Ann Charles

Ingredients:

4 large eggs

1 cup flour

1 cup milk

1/2 tsp salt

Whisk all of the above ingredients together in a bowl. Mix well so that the batter is thin with no lumps. Refrigerate for at least one hour before using.

Using a large six muffin tin, put 1 tsp of oil in each muffin hole. Preheat oven to 450 degrees, placing muffin tin in the oven to heat up during the preheating cycle. After the oven has reached temperature it is time to pour the batter.

Carefully slide the oven rack out just far enough so that you can quickly pour 1/6 of the batter in each hole of the muffin tin. It should sizzle and the oil should be slightly smoking. Careful! It will be hot. Slide the rack back in to the oven, close the door and bake for 25-30 minutes. DO NOT open the oven again. You can watch the puddings rise by just turning on the oven light. And you *will* be curious.

I made my first batch of these with white all-purpose flour. The second batch I made I using



Yorkshire Puddings. *Photos: Andrew Charles*



Toad-In-The-Whole, another British classic. Same basic recipe, but cooked in a baking dish with some breakfast sausage added.

whole wheat flour and if you do this you will need to leave the batter in the fridge overnight to hydrate fully. No yeast or baking powder is needed.

These Yorkshire Puddings rise beautifully and when you take them out of the oven most of the cooking oil is left behind. You can eat them plain, preferably when hot, or fill the pudding 'cup' with pretty much anything. Sweet or savory. Both work. I

liked the pizza option (a little pasta sauce, some mozzarella pearls, and some chopped pepperoni added for the last 5 minutes of cooking. YUM

Nutrients:

Yorkshire Pudding

1 serving

Calories - 166

Protein - 8 gm

Fat - 7 gm

Carbs - 16 gm

Fiber - 3 gm



NatureWise® Chick Starter Grower Count on a Difference *from day one.*

Only the best nutrition goes into every NatureWise product. Because when you support immunity and gut health from the inside, the results show in vitality, growth, and performance.

Every bag includes:

FlockShield™: Our special blend of ingredients that supports chick gut health, nutrient absorption, and immunity from day one

Four different essential oils:

Oregano, thyme, rosemary, and star anise help support immunity and promote chick vitality

Guaranteed levels of 4 different strains of live probiotics to support optimum digestion and nutrient absorption

Natural* plant extracts to support healthy bird growth and bone formation

18% protein: With guaranteed levels of the amino acids, lysine, and methionine that chicks need to support growth and muscle development

Vitamins and minerals:

A uniquely formulated blend that growing chicks need with guaranteed calcium, phosphorous, manganese, selenium, Vitamin A, Vitamin D3, and Vitamin E

Yucca schidigera extract:

Aids in the control of manure odor

*As defined by AAFCO

© 2022 Cargill, Incorporated. All rights reserved.



RESULTS YOU CAN SEE!

In a proprietary study of 190 chicks broken into two groups of 85 and conducted over an 18-week period to compare the results of feeding NatureWise® Chick Starter Grower to a leading premium brand, we observed the following outcomes.

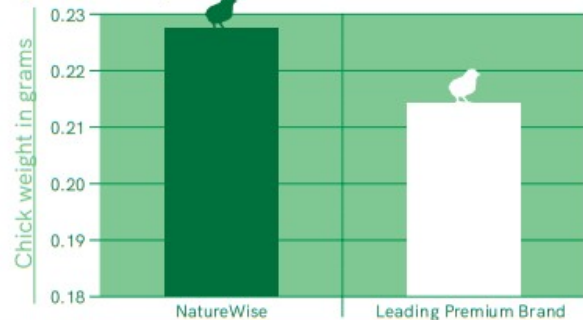
Livability – 0 to 18 Weeks

Chicks fed NatureWise Chick Starter Grower had no chick loss.



Gain to Feed – 0 to 18 Weeks

Chicks eating comparable amounts of feed showed more growth when fed NatureWise Chick Starter Grower.

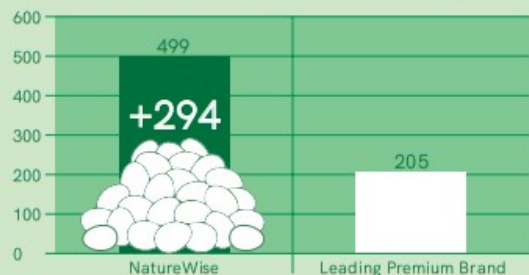


Egg-ceptional Early Nutrition Results in a Difference you can Count

*To measure the effects of early nutrition on egg laying we conducted a field study of 84 Speckled Sussex from a single hatchery. Chicks were broken into two groups of 42, from hatch to 18 weeks one group was fed NatureWise and the other, a nationally known leading premium brand. At 18 weeks all birds were switched to NatureWise 16% Layer Feed. Birds were given comparable amounts of feed, water, and lighting. Birds were housed next to each other with comparable housing and runs. During the first 14 weeks of laying the chicks started on NatureWise Chick Starter laid 294 more eggs than those started on the leading premium brand of chick starter.

Total Eggs – 1 to 14 Weeks

Chicks fed NatureWise laid more than double the eggs during the first 14 weeks of laying.*



Consumers are Experiencing the NatureWise Difference!

★★★★★ 5 out of 5 stars

Chicks growing faster and look more healthier!

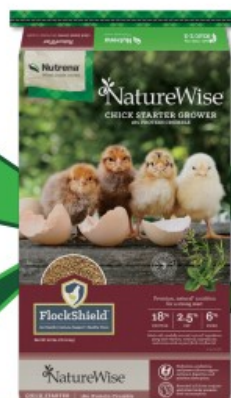
I was excited to try this feed out for my chicks. The feed I was giving them wasn't doing too well as I hoped. After I starting feeding them this chick starter, I noticed my chicks growing faster, they looked healthier, and they just seemed like they enjoyed this feed. When I raise chicks again, I will be feeding them NatureWise Chick Starter!



Facebook Post

The Peeper's Keeper

Just giving a shout out to Nutrena. We have hatched many many chicks over the years. We have heard good things about this product. Decided to give it a try. Well first thing noticed was absolutely no pasty butt! May not seem like much to some people but it sure beats having to pick poop off a little chick's butt! Will definitely keep feeding this to the chicks and take note of changes. Thanks ☺



★★★★★ 5 out of 5 stars

Healthiest chicks ever!

We have had chickens for 40 years, but never used Nutrena chick feed until this year. I am impressed with how well how the chicks we bought have done on this feed. They seem healthier, more energetic, and feathered earlier, grown faster, even poop less than on other feeds. All of which make my life easier!

★★★★★ 5 out of 5 stars

Perfect feed for healthier chicks!

2 weeks ago, I started my new chicks on this feed and have noticed how happy, healthy and perky they are. No instances of sick chicks or poop butts. So thankful!

160+
Positive
Reviews



Scan Me!

NutrenaWorld.com/see-the-difference

© 2022 Cargill, Incorporated. All rights reserved.



Dedicated to Preserving Rare Breeds for 105 Years

For over a century, Murray McMurray Hatchery has remained a trusted, family-owned business dedicated to preserving rare and Heritage breeds. Our team works tirelessly to ensure our poultry meets the highest standards. Whether you are an experienced enthusiast, or just embarking on the journey into keeping poultry, look to McMurray Hatchery for guaranteed quality rare and Heritage breeds, low minimums, and all the supplies you need to raise your flock.



SCAN TO REQUEST A FREE CATALOG

Murray McMurray

MCMURRAYHATCHERY.COM | 800.456.3280

Murray McMurray Photo Competition Winners:

Shelby McAtee, Jordon Elbert, and Julie Walker

Over 800 entries were submitted! Thank you to all of the participants!

Prizes: Shelby won an APA Standard Of Perfection. (https://www.mcmurrayhatchery.com/standard_of_perfection.html) - Jordon won a McMurray Poultry First Aid Kit (<https://www.mcmurrayhatchery.com/first-aid-kit.html>) - and Julie won a McMurray Exhibitor Kit. (https://www.mcmurrayhatchery.com/exhibitor_kit.html).



In the Beginning:

The American Class

By Ann Charles

All thirteen American Class breeds of Chickens are dual purpose breeds, from the Plymouth Rock to the Delaware, and all other breeds developed in between. Breed development of the American class covered the time frame of 1874 to 1952. Comb types are single, rose, pea, and cushion, with none of the combs comparable in size to the Mediterranean breeds. All thirteen breeds in the American Class have yellow skin and all lay brown eggs with the exception of the Lamona (white eggs). I don't think I have ever seen a Lamona. Certainly not at a show. Obviously, those developing breeds in the early years of the United States selected for traits that allowed their chosen breeds to thrive in the North American climate and fulfill the needs of the farmer. Two breeds led the way in the American Class and were the first to be accepted into the Standard of Perfection.

Dominique: The American Dominique is a cuckoo/barred colored bird and was admitted to the Standard of Perfection in 1874. It was there from the beginning and had been around long enough in the New England States that no reliable records of it's origins could be found. What the Dominique did



DOMINIQUE MALE

Dominique chicken by A. O. Schilling from the 1914 Standard of Perfection.

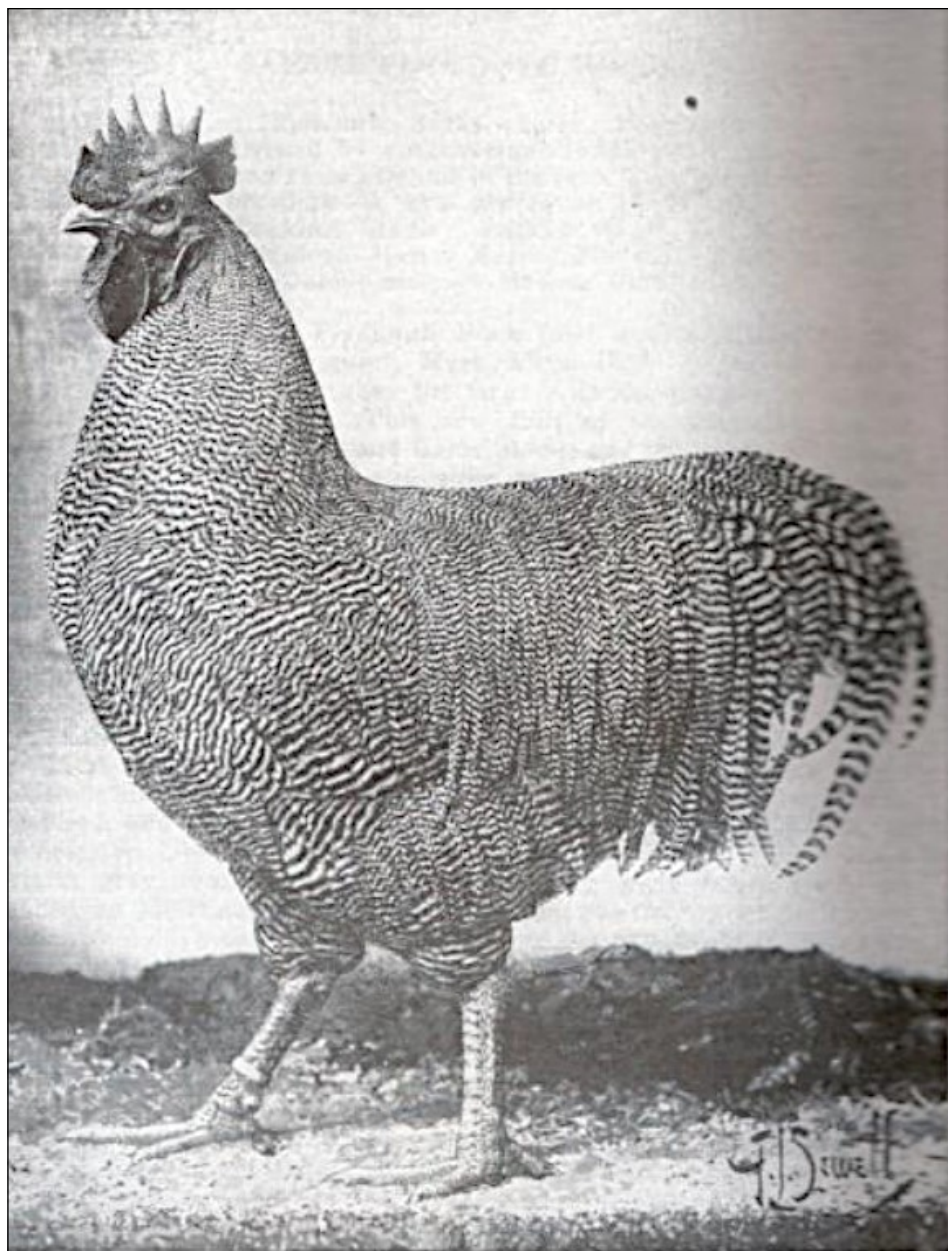
was set a standard for an American type chicken that other breeds worked from when creating new varieties. The Dominique was thought to possibly be a combination of Asiatic and Continental (Hamburg) bloodlines. Specific traits for this breed are that they are a dual purpose fowl of medium weight, yellow skinned, and laying brown

eggs. They are also clean legged, and clean headed (no muffs, beards, tufts). The current weight range for the Dominique is 4 pounds for pullets to 7 pounds for cocks. Except for the rose comb, this pattern of traits would guide all other American Class breeds developed over the next 200 years or so.

"In 1870, the organizers of a poultry show in New York ruled that rose-combed barred birds should be exhibited as Dominiques and single-combed barred birds should be entered as Plymouth Rocks. This ruling was confirmed in a Standard of Excellence in 1871. In 1874, the new American Poultry Association included the Dominique in the first edition of the American Standard of Perfection."

Source: <https://livestockconservancy.org/heritage-breeds/heritage-breeds-list/dominique-chicken/>

Barred Plymouth Rock: The first breed *listed* as being accepted into the American Class by the APA was the Barred Plymouth Rock which was developed using a single combed "hawk colored" Dominique male over 'Black Cochin' or 'Black Java' females in the area around Putnam, Connecticut. At the time of the Plymouth Rock's creation in the mid to later 1800's 'Black



Barred Plymouth Rock Male as Bred by E. B. Thompson, Amenia, New York.

E. B. Thomas bird—circa 1919

Cochin' and 'Black Java' was used synonymously in show classifications. This was before the first poultry standard in 1873. The resulting Barred Plymouth Rocks were included in the first Standard of Perfection published in 1874.

For those first 9 years of the APA, no other breed or variety of American Class Fowl was approved and included in the

Standard. Then in 1883, two varieties of Java (Black and Mottled) and the Silver Laced Wyandotte were accepted, and the number of American Class approved breeds and varieties increased to 4 breeds total, and 5 varieties. The Java would be the first self-colored variety (black) to be admitted to the American Standard of Perfection.

Egg Setting Table :

Determining Age For Shows

SET TABLE FOR DETERMINING AGE FOR SHOWS

SET MONTH	JAN	FEB	MAR	APR	MAY	JUN	JUL	AUG	SEP	OCT	NOV	DEC
JAN	X	1	2	3	4	5	6	7	8	9	10	11
FEB	X	0	1	2	3	4	5	6	7	8	9	10
MAR	X	0	0	1	2	3	4	5	6	7	8	9
APR	X	0	0	0	1	2	3	4	5	6	7	8
MAY	X	0	0	0	0	1	2	3	4	5	6	7
JUN	X	0	0	0	0	0	1	2	3	4	5	6
JUL	X	0	0	0	0	0	0	1	2	3	4	5
AUG	X	0	0	0	0	0	0	0	1	2	3	4
SEP	X	0	0	0	0	0	0	0	0	1	2	3
OCT	X	0	0	0	0	0	0	0	0	0	1	2
NOV	X	0	0	0	0	0	0	0	0	0	0	1
DEC	X	0	0	0	0	0	0	0	0	0	0	0

Edgar Mongold is a regular contributor to this magazine and he has been around long enough to have seen a thing or two. He recently sent me this chart for determining when to set eggs so that your resulting chicks mature enough for what ever shows you are planning to attend in the Fall and Winter. He has shared this chart on several Facebook groups but I thought a deeper explanation was warranted considering some of the newer breeders had not thought about planning this far ahead. When it comes to having your birds at their peak for your specific show dates some calculations are in order.

Personally, I want my Araucana pullets hatching so that are

about 24-28 weeks for the Fall shows I attend since my females lay heavy and lose condition quickly. With most Araucana the males need a couple more months and I plan accordingly. Obviously, I don't have to worry about tail feather development because Araucana have none. Yet, I still want my cockerels mature enough by showtime that they have a nice drape of the cape feathers over their rump and wing tips. Of course, this describes my birds, since I know them and someone else's Araucana of a different line might take longer or even less time. It is important that you know your own birds and breeds when it comes to using the diagram above.

But back to Edgar and his chart . . . Edgar is well know for his success with New Hampshire, both bantam and large fowl, and also for Seramas, so I asked him for specifics on these two breeds that he usually works with.

According to Edgar, Seramas are not as predictable on when they will peak due to variations based on strains and varieties. However, regarding the New Hampshire Bantams he could be much more specific:

In his own words, " I do the following: This year I am hatching for the MEGA Show and the Ohio National. They are the first and second weekends in November. For cockerels, I set January, and they will be 9 months old (at

show time), those set in February will be 8 months old, and set in March 7 months old. By having cockerels at 9, 8, and 7 months old some should peak out for those first 2 weeks in November. Those that don't peak out are "filler" birds for my displays."

"Out of 7 or 14 entries (one or 2 displays) there are only going to be 3 or 4 birds that make your heart beat a little faster when you look at and handle them. Pullets from these early months (January/February/March) will most likely be shown as hens. Pullets set in April will be 6 months old, set in May will be 5 months old and set in June will be 4 months old by show time. Once again - a spread to cover any fluctuations in development for the age they peak. My New Hampshire bantams lay well enough to take the bloom off from egg production. I plan for my pullets to peak out as close to those first one or two eggs laid."

Edgar concluded by making general suggestions on breeding

and training exhibition poultry.

- 1) Duplicate proven matings as well as try new combinations.
- 2) Cull, cull and cull some more to ensure the top selection birds have room to develop to their top potential
- 3) Separate cockerels and pullets as quickly as possible.
- 4) Individually cage as soon as possible based on quality of bird and if they will peak for a chosen show.
- 5) When fully developed overall, restrict your show prospects to maintenance feed.
- 6) Spend time coop training. Socialize your birds with other people and acclimate them to noise and activity around them.
- 7) Rotate birds to various areas, cages and around different birds.
- 8) Watch for birds going flat mentally from being overwhelmed with getting them ready for show. Remember the old saying "Too much of a good thing".

Thank you Edgar!

Ann Charles, EPMag Editor

Do you ever wonder where some of these persistent 'old wives' tales come from in regard to poultry? Not the good ones that have value, but the silly ones that you know from experience are nothing more than B.S.

I recently ran across the roots of one that dates back to antiquity and the person who started this one should have known better. In regard to sexing chicks by the shape of the eggs they come from . . .

"Long and pointed eggs are female; those that are round, or more rounded at the narrow end, are male."
THE HISTORY OF ANIMALS
by Aristotle (384–322 BC)

**Smith Poultry
Supplies**



Website:

<http://www.poulttrysupplies.com/>

Email: smithkct@centurylink.net

Competitive prices & fast, dependable service since 1988.

We offer a complete line of supplies for show poultry & backyard flocks: Incubation and brooding supplies, netting, shipping boxes, medications, vaccines, blood testing supplies, vitamins, books, feeders, water jars & bases, 6 sizes of cage cups in gray, black, red, blue, purple, pink & green, & leg and wing bands, and much more.

2023 MEGA SHOWS UPCOMING EVENTS 2023

March 11

Oklahoma State Championships

Open, Junior Divisions, Large Fowl, Bantams, ALFA, Waterfowl, Turkeys. Norman, OK

June 10

CVJPC Poultry Field Day

Show Chick Prospect Show Only. Games, Seminars, Awards,. Norman, OK

Nov 4

8th Annual MEGA SHOW

The Nations Largest Premium Show. All Varieties of Poultry and Waterfowl, Turkeys,. Norman, OK.

Nov 25

Kansas Mini Mega Show

Open & Junior, LF, Bantams, Waterfowl, ALFA. . Showmanship, Games, Fun, etc. Hutchinson, KS.

Dec 2

2nd Annual JR Nationals

Norman, OK. LF, Bantams, Open Show, JR Show, Waterfowl, ALFA, Games, Showmanship, Raffle, etc... Crowning of MEGA JR Exhibitor of the Year

**FOR MORE INFORMATION VISIT US @
WWW.poultryshowcase.COM**